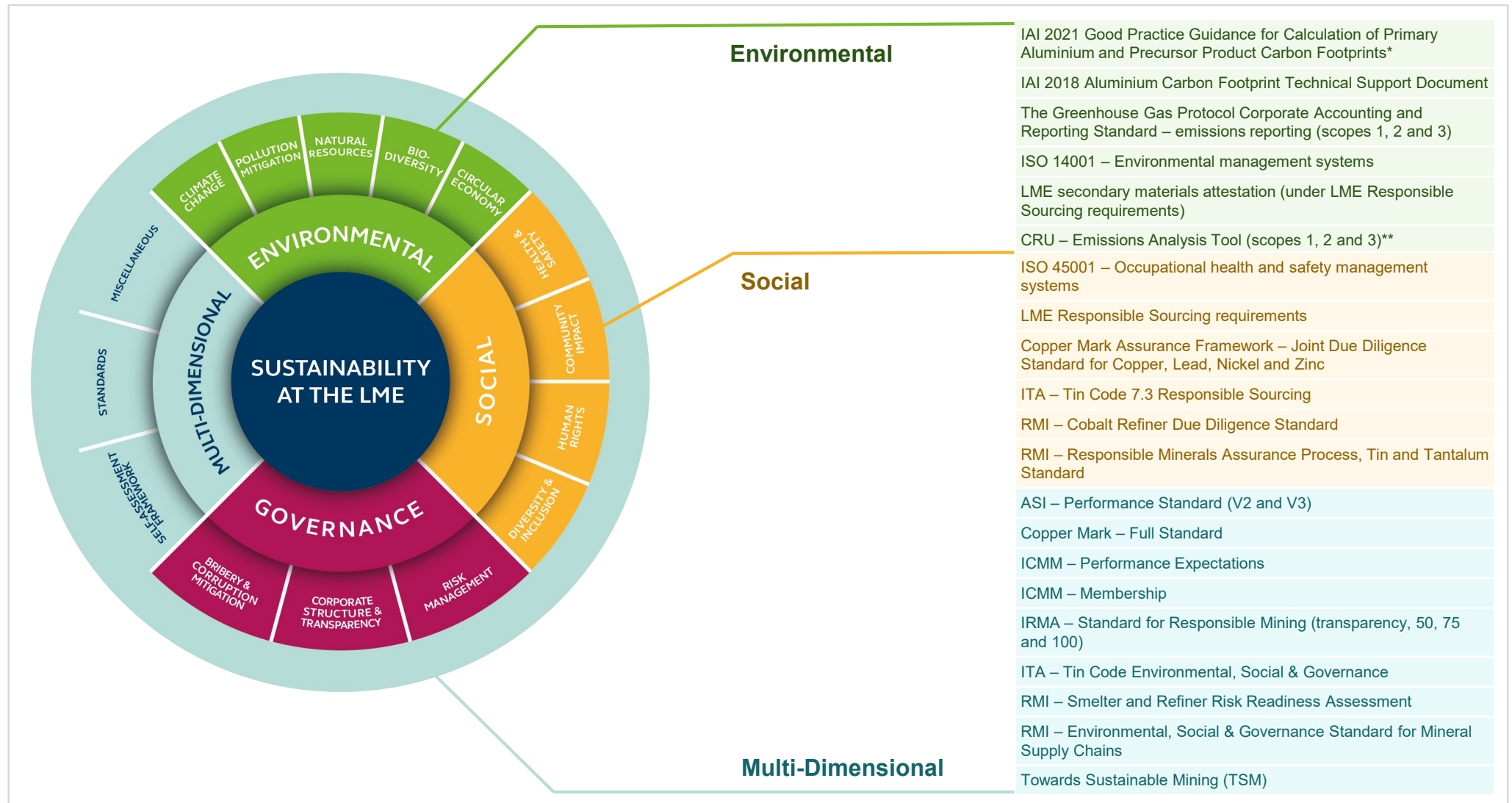


Sustainability data is appended to LMEpassport Records



* In August 2021, the IAI published its “Good Practice for Calculation of Primary Aluminium and Precursor Product Carbon Footprints” (available for disclosure on LMEpassport). For future disclosures related to IAI emissions guidance, the LME encourages producers of LME aluminium brands to use this most recent guidance.

** The CRU Emissions Analysis Tool provides independently assessed smelter emission ranges for scopes 1 & 2 along with an additional scope 3 category related to purchased anodes

