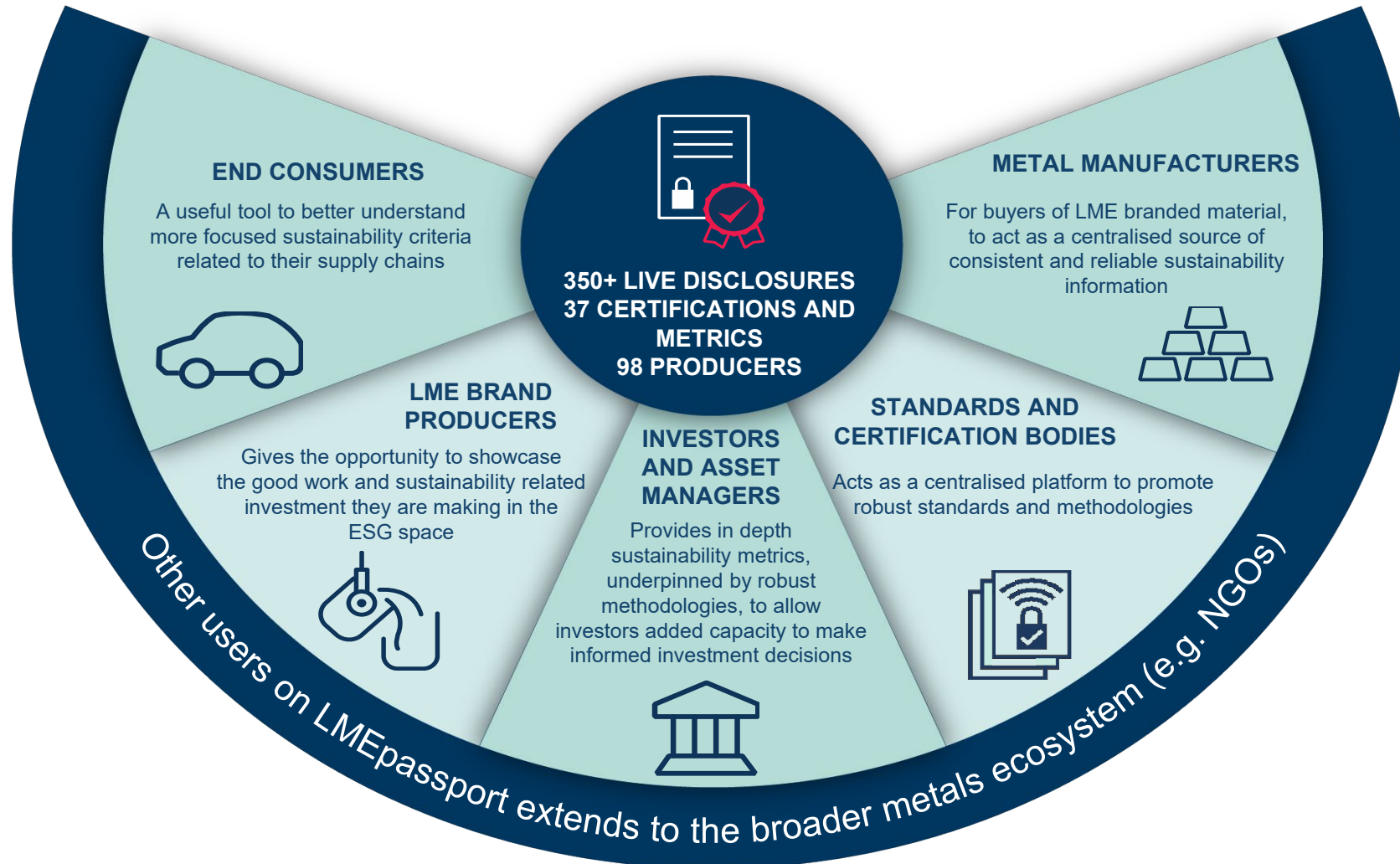


LMEpassport – the drive to transparency and comparability

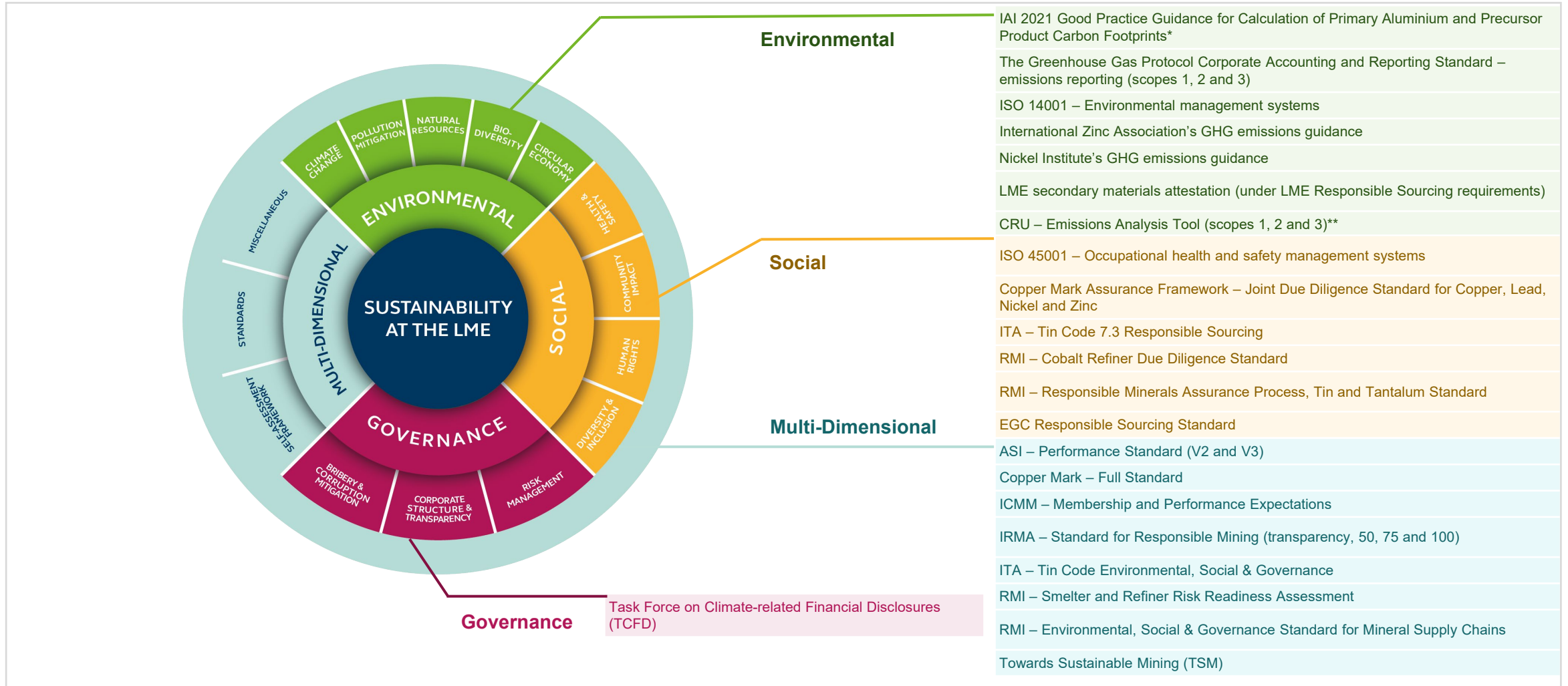
Hugo Brodie, VP, Sustainability, LME

LMEpassport sustainability – who is it for?

LMEpassport sustainability data is available free of charge to all of our stakeholders on the LME website. The system is for everyone. However, more specifically:



LMEpassport approved certifications and methodologies






* In August 2021, the IAI published its “Good Practice for Calculation of Primary Aluminium and Precursor Product Carbon Footprints” (available for disclosure on LMEpassport). For future disclosures related to IAI emissions guidance, the LME encourages producers of LME aluminium brands to use this most recent guidance

3 ** The CRU Emissions Analysis Tool provides independently assessed smelter emission ranges for scopes 1 & 2 along with an additional scope 3 category related to purchased anodes



How can users share sustainability data with LMEpassport?

1. Theme / Sub-theme	2. Disclosure	3. Proof Point	4. Methodology <i>if needed</i>
<ul style="list-style-type: none"> High level segmentation of disclosures e.g. <i>Environmental - Pollution</i> <div data-bbox="224 672 652 1022" style="border: 1px solid #ccc; border-radius: 15px; padding: 20px; text-align: center;"> <p>Dropdown list</p> </div> <div data-bbox="224 1046 652 1282" style="border: 1px solid #ccc; border-radius: 15px; padding: 10px;"> <p>Permitted users:</p> <div style="text-align: center;">  <p>Producer</p> </div> </div>	<ul style="list-style-type: none"> Specific disclosures to be made e.g. <i>ISO 14001 - Environmental Management</i> <div data-bbox="777 672 1205 1022" style="border: 1px solid #ccc; border-radius: 15px; padding: 20px; text-align: center;"> <p>Dropdown list and Populate configurable supporting fields₁</p> </div> <div data-bbox="777 1046 1205 1282" style="border: 1px solid #ccc; border-radius: 15px; padding: 10px;"> <p>Permitted users:</p> <div style="text-align: center;">  <p>Producer</p> </div> </div>	<ul style="list-style-type: none"> Supporting documentation showing by whom and when the disclosure was made e.g. <i>ISO 14001 inspection and audit report</i> <div data-bbox="1332 672 1760 1022" style="border: 1px solid #ccc; border-radius: 15px; padding: 20px; text-align: center;"> <p>Free text or Web link or Document upload</p> </div> <div data-bbox="1332 1046 1760 1282" style="border: 1px solid #ccc; border-radius: 15px; padding: 10px;"> <p>Permitted users:</p> <div style="text-align: center;">  <p>Producer</p> </div> </div>	<ul style="list-style-type: none"> Detail around the methodology adopted under the disclosure e.g. <i>ISO 14001 web-page</i> <div data-bbox="1880 672 2308 1022" style="border: 1px solid #ccc; border-radius: 15px; padding: 20px; text-align: center;"> <p>Same as proof point or Free text or Web link or Document upload</p> </div> <div data-bbox="1880 1046 2308 1282" style="border: 1px solid #ccc; border-radius: 15px; padding: 10px;"> <p>Permitted users:</p> <div style="text-align: center;">  <p>Producer</p> </div> </div>



The new dynamic LMEpassport sustainability platform

LMEpassport sustainability data is underpinned by new easy-to-navigate interface and search functionality

Filters & Search

Company: [Dropdown] Metal: [Dropdown] Brand: [Dropdown] LME Deliverable: [Dropdown]

Assets: [Dropdown] Value-Add Themes and Disclosures: [Dropdown] Search: [Input] Search [Clear]

Last updated on: 21 October, 2022 10:28:57 AM

COMPANY	ASSET	BRAND	LME DELIVERABLE	THEME	METAL	DISCLOSURE	DISCLOSURE LEVEL	VALID FROM	VALID TO	METRIC	METRIC LABEL/NOMINAL	PROOF POINT
Antofagasta Minerals	Minera Centinela	MET	Deliverable	Environmental - Climate Change - Corporate Emissions Reporting	COPPER - GRADE A	Total Scope 1 & Scope 2 – Total Emissions reporting – The Greenhouse Gas Protocol Corporate Accounting and Reporting Standard	Brand	01-Jan-2021	31-Dec-2021	996100	t CO2-e	https://www.antofagasta.co.uk/media/4326/antofagasta-sustainability-report-2021-english.pdf
Antofagasta Minerals	Minera Centinela	MET	Deliverable	Environmental - Climate Change - Corporate Emissions Reporting	COPPER - GRADE A	Scope 2 – Total Emissions Reporting – The Greenhouse Gas Protocol Corporate Accounting and Reporting Standard	Brand	01-Jan-2021	31-Dec-2021	556616	t CO2-e	https://www.antofagasta.co.uk/media/4326/antofagasta-sustainability-report-2021-english.pdf
Antofagasta Minerals	Minera Centinela	MET	Deliverable	Environmental - Climate Change - Corporate Emissions Reporting	COPPER - GRADE A	Scope 1 – Total Emissions Reporting – The Greenhouse Gas Protocol Corporate Accounting and Reporting Standard	Brand	01-Jan-2021	31-Dec-2021	439484	t CO2-e	https://www.antofagasta.co.uk/media/4326/antofagasta-sustainability-report-2021-english.pdf
Antofagasta Minerals	Compania Minera Zaldivar	ZALDIVAR	Deliverable	Environmental - Climate Change - Corporate Emissions Reporting	COPPER - GRADE A	Total Scope 1 & Scope 2 – Total Emissions reporting – The Greenhouse Gas Protocol Corporate Accounting and Reporting Standard	Brand	01-Jan-2021	31-Dec-2021	320030	t CO2-e	https://www.antofagasta.co.uk/media/4326/antofagasta-sustainability-report-2021-english.pdf
Antofagasta Minerals	Compania Minera Zaldivar	ZALDIVAR	Deliverable	Environmental - Climate Change - Corporate Emissions Reporting	COPPER - GRADE A	Scope 2 – Total Emissions Reporting – The Greenhouse Gas Protocol Corporate Accounting and Reporting Standard	Brand	01-Jan-2021	31-Dec-2021	163530	t CO2-e	https://www.antofagasta.co.uk/media/4326/antofagasta-sustainability-report-2021-english.pdf
						Scope 1 – Total Emissions						



LME Week – LMEpassport enhancements announcements

Ongoing evolution and growth of LMEpassport

NEW CERTIFICATIONS

Enabling one emissions methodology for asset-level disclosures by metal



GROWING USER PARTICIPATION

Increasing the number of LME brands using LMEpassport. Opening LMEpassport to facilitate the reporting of sustainability credentials for non-LME listed brands made by LME brand producers



DYNAMIC SUSTAINABILITY WEBPAGE

Brand new user-friendly web page showcasing producer sustainability credentials and producer information

