

# New Trading Platform Update Forum

20 January 2021



SETTING THE GLOBAL STANDARD



# Housekeeping

- **Questions** – please submit any questions you have throughout the webinar using the Q&A function. If given the option, please direct your question to “*All panellists*” rather than any individual speaker. We will do our best to answer all questions, but will respond directly to you with the answer to any we don’t have time for.
- **Slides** – slides will be distributed to everyone by email after the session.
- **Recording** – this session is being recorded, and the recording will be shared with attendees after the event should you wish to share with colleagues who were unable to join today.
- **Follow-up** – if you have any questions that you’d like to discuss with one of the team directly, please reach out at [newtradingplatform@lme.com](mailto:newtradingplatform@lme.com).



# Forum overview

## LME new trading platform initiative

The purpose of the forum is to update Members, ISVs, Market Data Vendors and Clients on the progress of the LME new trading platform initiative.

### 1. A recap of the key areas

- TT Trading GUI, “LMEtrader”
- Market data
- FIX/Binary gateways
- Market migration

### 2. Updates on

- Project timelines
- Customer testing
- Go-live
- Next steps and timeline

Please note, the following slides contain a number of dates and timelines that are based on the latest information. Any changes to these dates/timelines will be communicated via the methods described at the end of this presentation.



# Application versions

Summary of the current and future application version numbers

Trading venue	Current trading platform	Future trading platform	Current market data platform	Future market data platform
Electronic	LMeselect (v9)	LMeselect (v10)	LMESource (v3) LMeselectMD	LMESource (v4)
Ring			LMeselectMD	LMESource (v4)
Inter-office			LMeselectMD	LMESource (v4)



# Market design

# Market design – key features and external impacts

New trading platform initiative involves a number of changes that will impact market participants

New LMEselect (v10) offering enhanced functionality

New FIX 5.0 interface (replaces current FIX 4.4 interface) offering convenience of industry standard interface

New binary interface offering reduced latency

New market design based on market partitions offering predictable latency and scalability

New LMEtrader application offering improved distribution

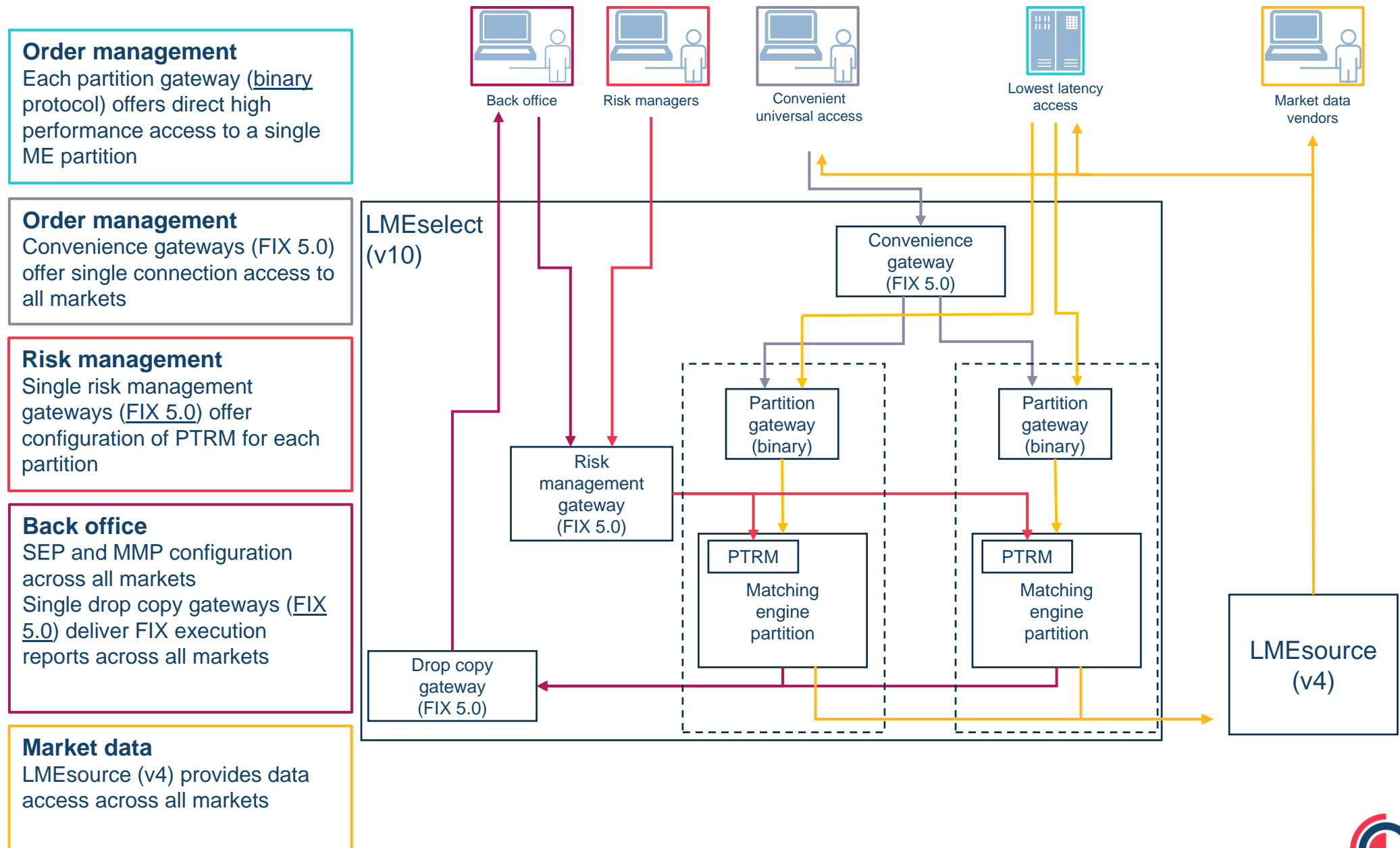
New LMEsource (v4) providing market data pertaining to the Ring, inter-office and electronic trading venues – replaces the current LMEselectMD and LMEsource (v3)





# Market design – market partitions

Market partitions offering performance, predictable latency and scalability



# LMeselect (v10) – FIX and binary interfaces

LMeselect (v10) will support both FIX 5.0 and Binary interfaces

	FIX 5.0	Binary
Objective	<ul style="list-style-type: none"><li>• Single gateway connection to all market partitions</li></ul>	<ul style="list-style-type: none"><li>• Fastest route to a single partition</li><li>• Specifically designed to reduce latency</li></ul>
Principles	<ul style="list-style-type: none"><li>• Aligned with FIX principles</li><li>• Minimise use of custom tags</li></ul>	<ul style="list-style-type: none"><li>• Proprietary protocol, based on the existing HKEX cash binary interface</li></ul>
Convenience gateway	Yes (excluding mass quotes)	No
Partition specific gateway	No	Yes (including mass quotes)
Drop copy gateway	Yes	No
Risk management gateway	Yes	No
Specifications	Available on the New Trading Platform website; <a href="https://www.lme.com/Trading/New-initiatives/New-trading-platform/FIX-binary-and-GUI">https://www.lme.com/Trading/New-initiatives/New-trading-platform/FIX-binary-and-GUI</a>	
Test Service Availability	Q2 2021 (Connectivity) Q3 2021 (Conformance)	





# LMeselect (v10) – timeline

FIX 5.0 & Binary interface



# LMetrader

# LMTrader – overview

The LME will partner with Trading Technologies to provide the front-end interface for LMEselect (v10)



## Lowering barriers to entry

- Advanced browser-based trading GUI
- Mobile access for Android and iOS (if permissioned by member)



## Broadening participation in our market

- Direct access to clients and members
- Access to all LME products



## Enhancing the user experience

- Rich feature set including options trading functionality and RFQs
- Customisable layout that persists through upgrades



## Early adoption

- LMTrader available Q4 2021 on the current LMEselect (v9) to support user familiarisation and early adoption

# LMTrader – key features

## Summary of features provided by the new trading GUI

### Access

- ❖ Browser-based access for Chrome, Firefox and Edge
- ❖ Wider distribution with direct access for members and their clients
- ❖ Pre-defined, customisable & sharable workspaces
- ✓ Mobile access for Android and iOS

### Market Data

- ❖ Charting and analytics

### Order Entry

- ❖ Trade the entire LME product suite
- ❖ Market depth ladder
- ❖ Single click order entry

### Order Book Mgt.

- ❖ Broken date spreads
- ❖ Intra-day strategy creation
- ✓ Enhanced merged order books

### Premium Quoted Options

- ✓ Submit and subscribe to RFQs
- ✓ Trade premium quoted options
- ✓ “On the fly” options strategy creation

### Risk Mgt.

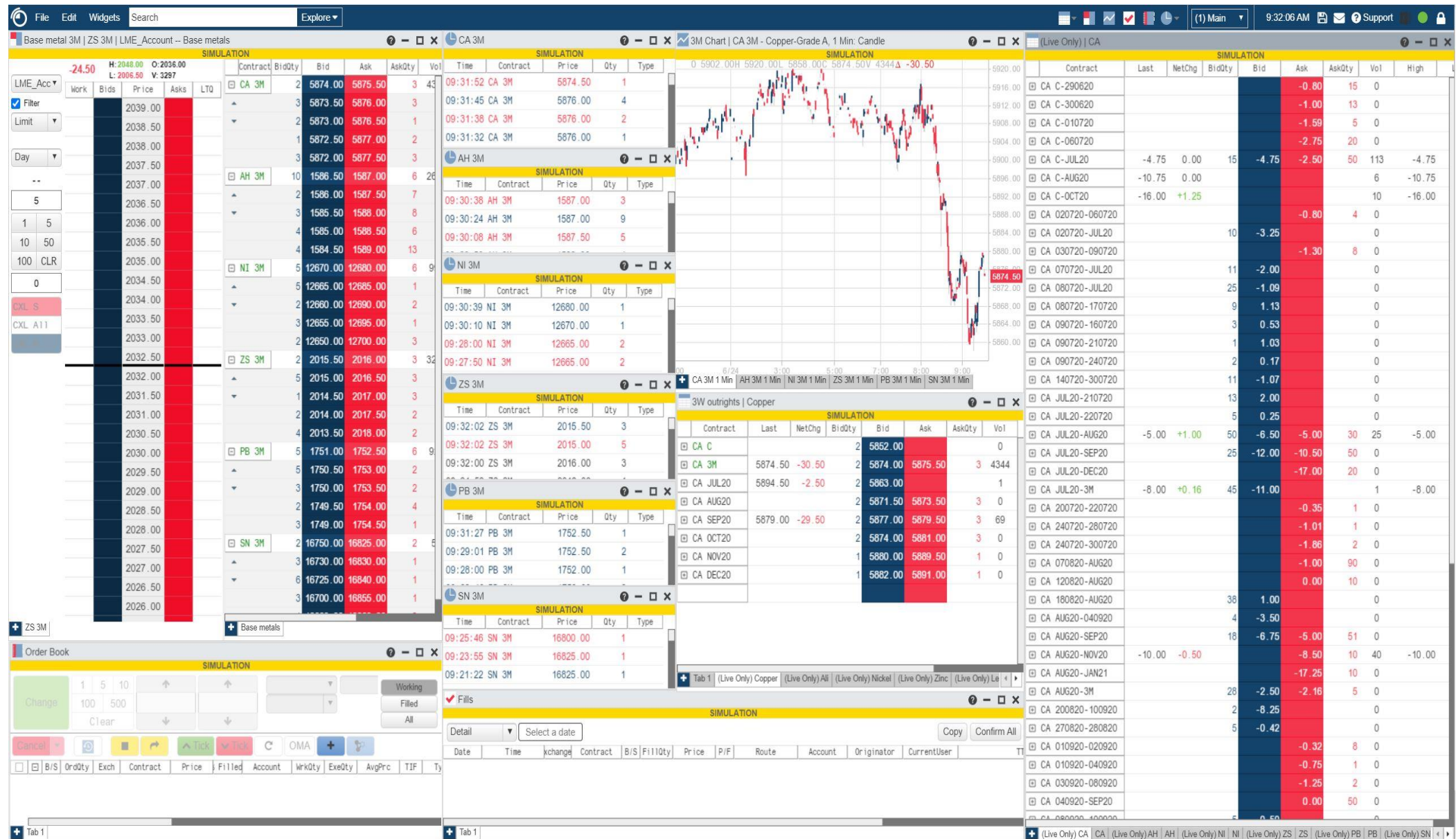
- ✓ PTRM configuration
- ✓ Self execution prevention
- ✓ Kill switch
- ✓ Market maker protection

❖ Supported on LMEselect (v9) and LMEselect (v10)

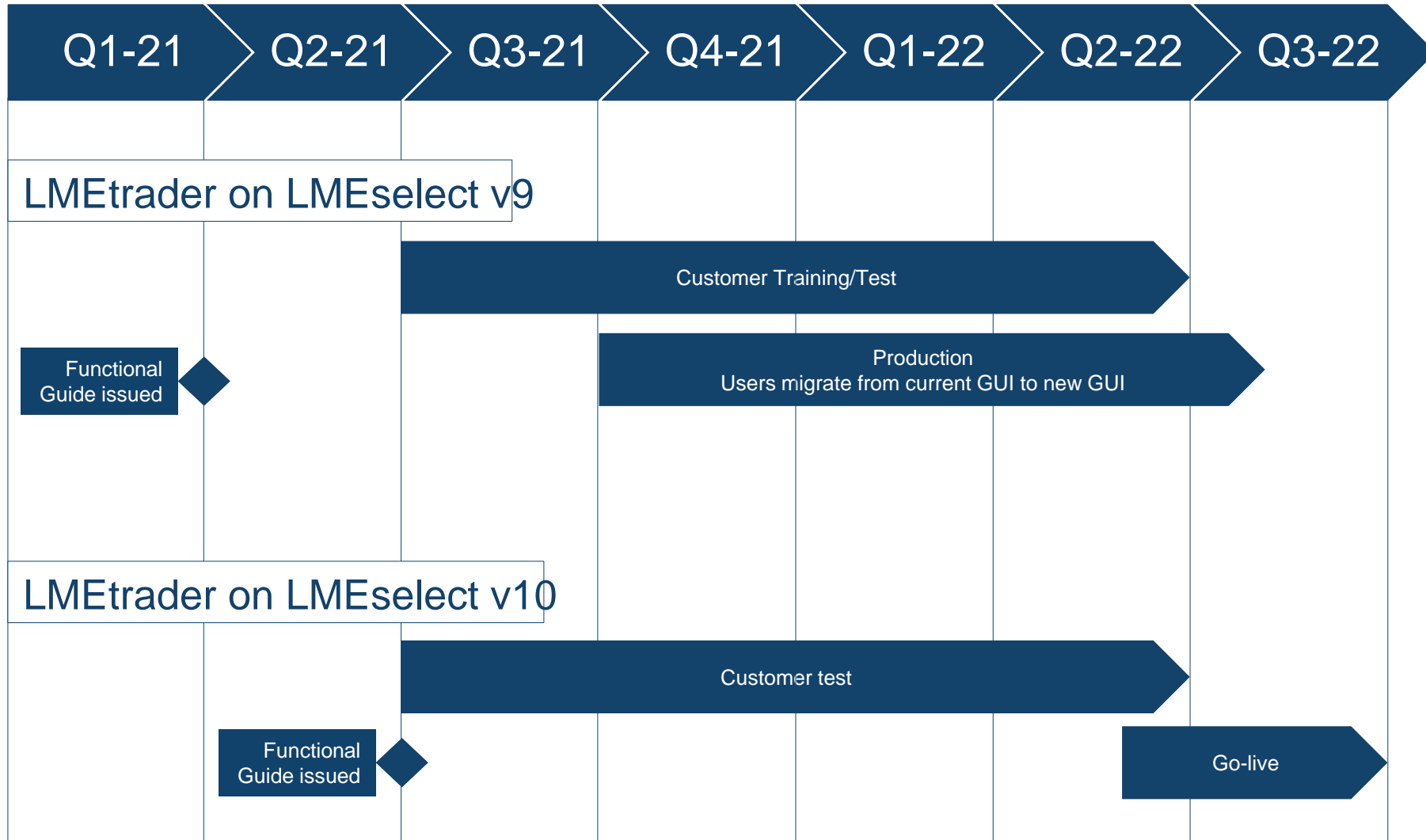
12 ✓ Supported on LMEselect (v10) only



# LMetrader – prototype screen shot



# LMTrader – timeline





# Market data

# Market data – electronic trading

All new and fully re-built version of LMEsource (v4) to support LMEselect (v10)

## Key features:

- All functionality offered by LMEselect (v10)
- Orders and trades available together in the same market data channel
- Separate channels for options and futures
- RFQ details to be included in the order and trade channel
- Reference data, providing a full list of securities/tradeable instruments
- Publication of ISINs in the reference data channel
- Level 3 product: new order-by-order events published from the electronic market

## Key dates:

- Client Interface Specification issued Q2 2020
- Connectivity test Q2 2021
- Test service available from Q3 2021

Please note: The current LMEselectMD & LMEsource (v3) platforms will not support LMEselect (v10) **and will be decommissioned.**



# Market data – non-electronic trading

All new and fully re-built version of LMEsource (v4) will provide Ring and inter-office market data

## Key features:

- Offer equivalent non-electronic market data for:
  - LME reference prices (eg LME Official Prices, LME Closing Prices, LMEbullion prices)
  - Inter-office and Ring orders and trades
  - Inter-office and Ring reference data
  - Trading volume data
  - Warehouse stock data
  - Risk data (e.g. EOI, MOI and Futures Banding)
  - ISIN data provided

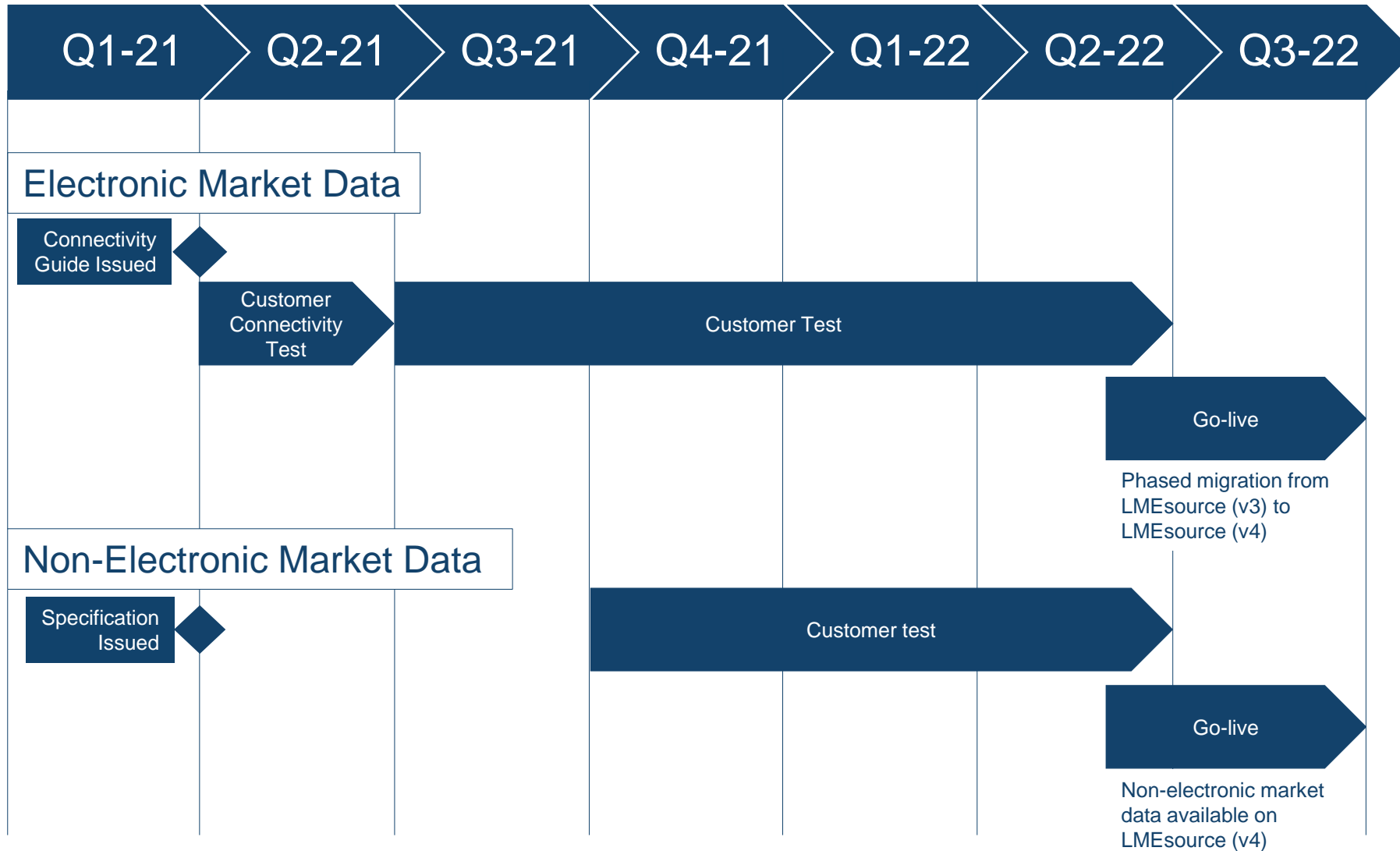
## Key dates:

- Client Interface Specification issued Q1 2021
- Test service available from Q4 2021

Please note: The current LMEselectMD **will be decommissioned** as part of the migration to LMEselect (v10).

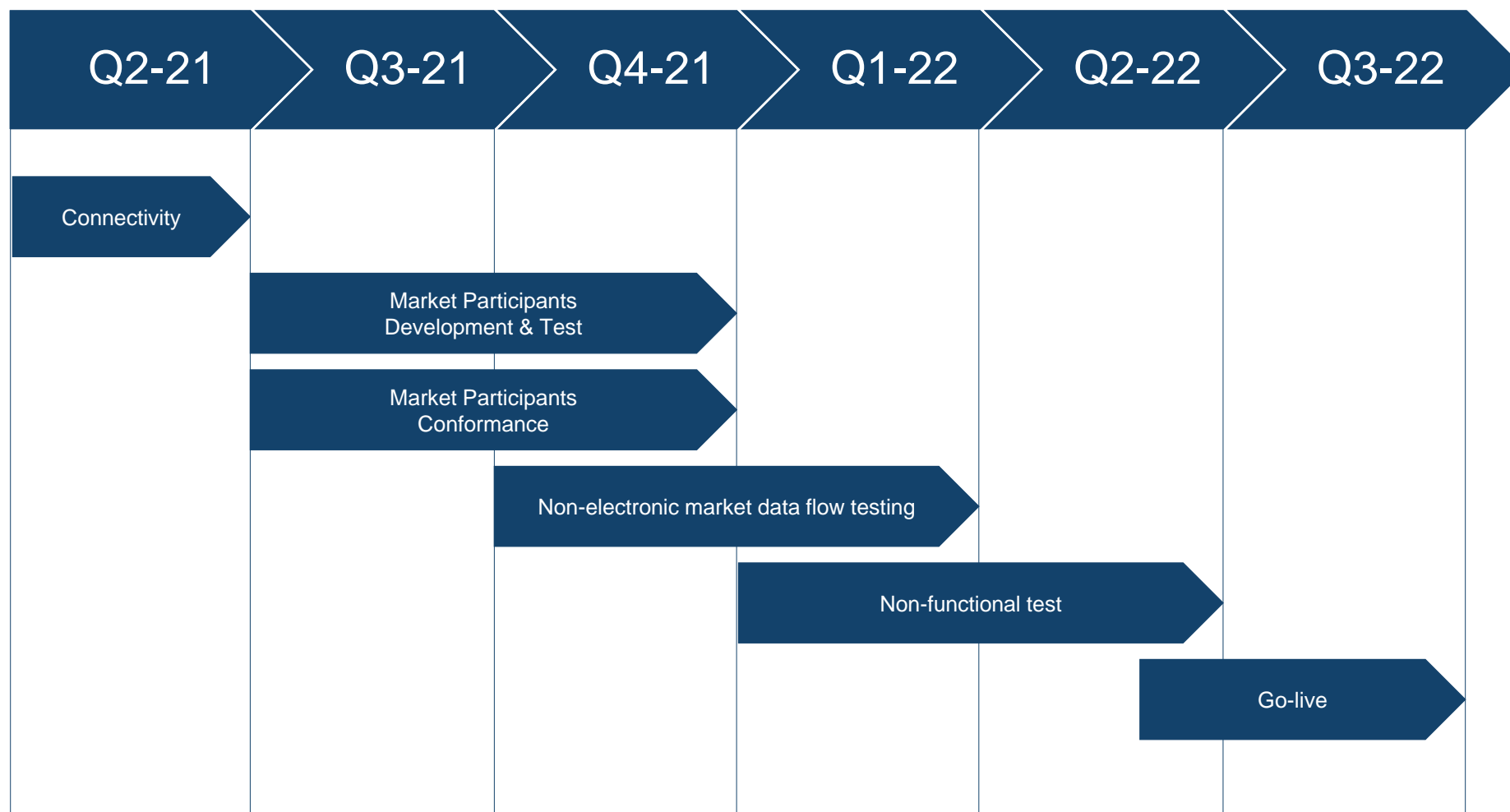


# Market data – delivery roadmap



# Customer testing

# Customer test – high-level plan





# Market migration

# Migration approach

## Migration approach proposal

- To minimise migration risk from LMEselect (v9) to the new LMEselect (v10) the LME is proposing a phased migration
- Migration phases will be product based
- It is assumed migration will consist of two phases, with a short period between each
- Each migration phase will be “big bang” – no provision for backwards/forwards compatibility
- LME will assist participants with their migration preparation including:
  - Regular communication updates
  - Early visibility of technical specifications
  - Six-month (minimum) test window including dev/test, conformance, end-to-end
  - All migration phases to be rehearsed in a customer test environments



# Next steps and timeline

# Next steps

New trading platform initiative involves a number of changes that **will** impact market participants

## Participant next steps:

## Due Date:

- Line up development and testing resources
- Assign Project Manager/Point Of Contact

Now

- Provide feedback on the LMEselect (v10) FIX 5.0 & binary interface specification

Now

- Provide feedback on the LMEsource (v4) client interface specification for electronic market data

Now

- Provide feedback on the LMEselect (v10) Functional Definition

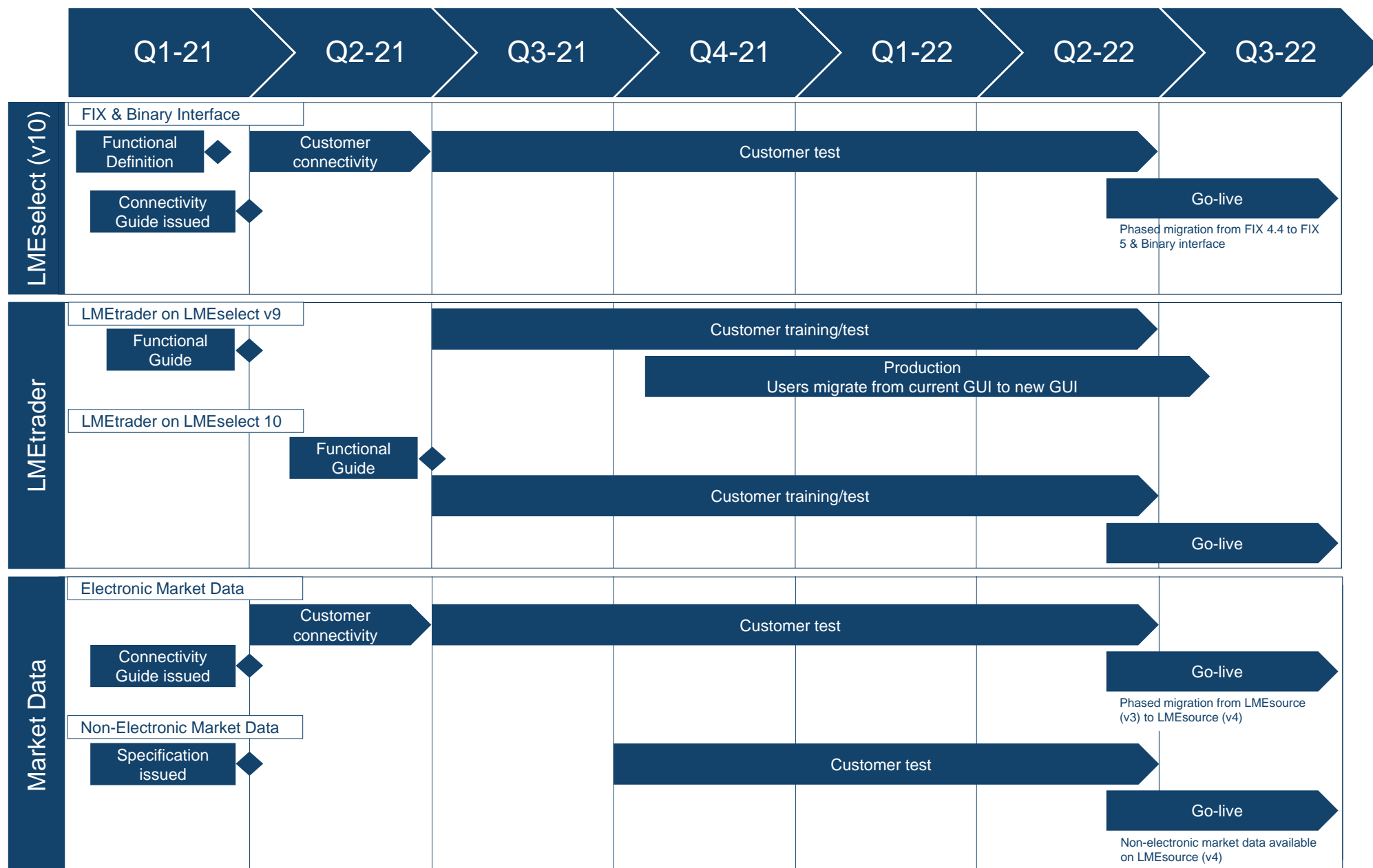
Q1 2021

- Provide feedback on the LMEsource (v4) client interface specification for non-electronic market data

Q1 2021



# High-level timeline



# External communications

## Regular and ad-hoc project updates

### Member actions

- Please assign a Project Manager/Point Of Contact for LME to liaise with

### Ad-hoc queries

- Any questions related to the new trading platform can be submitted via the [newtradingplatform@lme.com](mailto:newtradingplatform@lme.com) inbox

### Regular updates

- Regular updates will be posted onto the LME web site  
<https://www.lme.com/en-GB/Trading/New-initiatives/New-trading-platform>

### Specifications

- LMEselect (v10) Functional Definition to be issued Q1 2021
- LME Systems Connectivity Guide to be issued Q1 2021
- LMEsource (v4) Client Interface Specification for non-electronic to be issued Q1 2021
- LMEtrader functional guide due to be issued Q2 2021

### Update forum

- Next forum scheduled for Q2 2021





# Disclaimer

© The London Metal Exchange (the “LME”), 2021. The London Metal Exchange logo is a registered trademark of The London Metal Exchange.

All rights reserved. All information contained within this document (the “Information”) is provided for reference purposes only. While the LME endeavours to ensure the accuracy, reliability and completeness of the Information, neither the LME, nor any of its affiliates makes any warranty or representation, express or implied, or accepts any responsibility or liability for, the accuracy, completeness, reliability or suitability of the Information for any particular purpose. The LME accepts no liability whatsoever to any person for any loss or damage arising from any inaccuracy or omission in the Information or from any consequence, decision, action or non-action based on or in reliance upon the Information. All proposed products described in this document are subject to contract, which may or may not be entered into, and regulatory approval, which may or may not be given. Some proposals may also be subject to consultation and therefore may or may not be implemented or may be implemented in a modified form. Following the conclusion of a consultation, regulatory approval may or may not be given to any proposal put forward. The terms of these proposed products, should they be launched, may differ from the terms described in this document.

Distribution, redistribution, reproduction, modification or transmission of the Information in whole or in part, in any form or by any means are strictly prohibited without the prior written permission of the LME.

The Information does not, and is not intended to, constitute investment advice, commentary or a recommendation to make any investment decision. The LME is not acting for any person to whom it has provided the Information. Persons receiving the Information are not clients of the LME and accordingly the LME is not responsible for providing any such persons with regulatory or other protections. All persons in receipt of the Information should obtain independent investment, legal, tax and other relevant advice before making any decisions based on the Information.

LME contracts may only be offered or sold to United States foreign futures and options customers by firms registered with the Commodity Futures Trading Commission (CFTC), or firms who are permitted to solicit and accept money from US futures and options customers for trading on the LME pursuant to CFTC rule 30.10.

The LME is authorised and regulated by the Financial Conduct Authority in respect of its benchmark administration activities under the European Benchmarks Regulation (Regulation No (EU) 2016/1011) (“BMR”), as onshored into UK law.

