

TIN FOR TOMORROW

DATE: 09/10/2023

PREPARED BY: JEREMY PEARCE

PREPARED FOR: LME METALS DEBATE



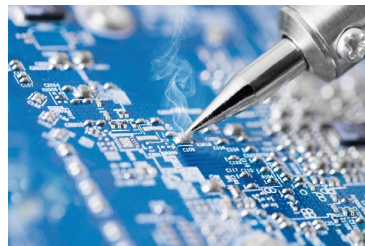
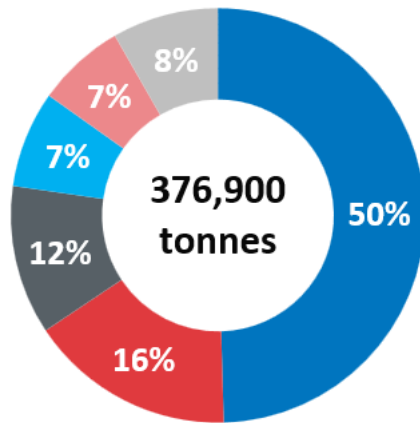
A small amount of tin is everywhere in modern life

Alloys – molten tin is used to make glass windows flat

Tin-copper products are part of all electrical systems

Lead-acid batteries keep vehicles running and backup data servers

Tinplate packaging feeds millions of people every day, preventing food waste



Solder joins together all electronics as well as electrical systems and plumbing



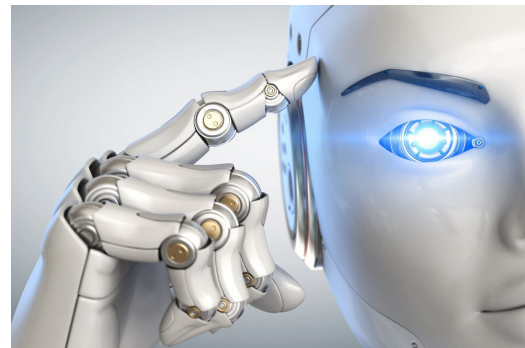
Tin chemicals have over 100 uses including PVC pipes, windows and doors

The forgotten metal

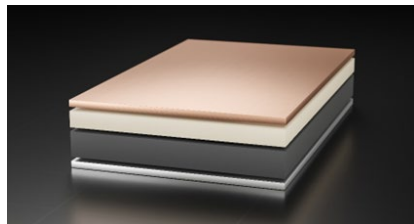
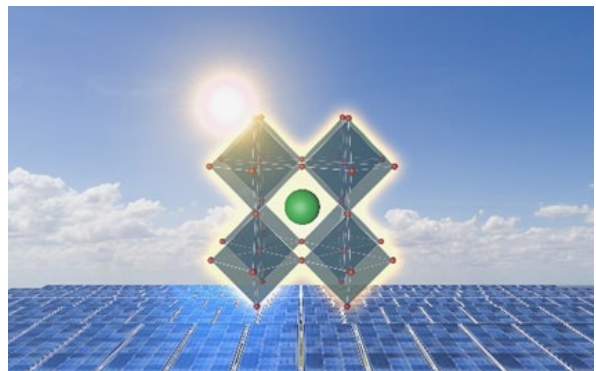
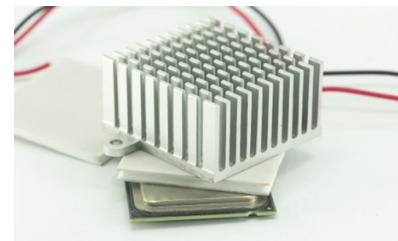
Climate change



Digitalisation



An essential metal for our future



A unique technology metal

Thank You

We believe that global co-operation on markets, technology, sustainability and regulatory issues is the most cost effective route to achieve long-term success for the industry. If we work together effectively then the outlook for tin is very positive.

Global co-operation for long-term success

International Tin Association
Unit 3, Curo Park
Frogmore St. Albans
Hertfordshire
AL2 2DD
United Kingdom
+ 44 (0)1727 875544
www.internationaltin.org

International Tin Association China
Rm 1501, Office Tower 1
Henderson Centre
18 Jianguomennei Street,
Dongcheng District
Beijing
100005 China,
+86-10-6808-0915 / +86-10-8833-3688
chinaoffice@internationaltin.org
www.internationaltin.com.cn

